



APEX
Program for School Leadership

“We must ... receive glory from [our mentors], together with their goodwill and friendship, since, as Plato says, people cannot be good leaders unless they have first been good servants.”

— Plutarch, “How to Be a Good Leader”



More Information: 602.438.7045 | info@greatheartsapex.org
greatheartsapex.org

APEX Program for School Leadership is a series of short courses designed for developing leaders of classical education. The program provides targeted, continuing education pertaining to school culture, instructional and operational excellence, and a classical philosophy of leadership. **Rooted in centuries of classical wisdom and decades of practical experience**, APEX is a program designed to cultivate the prudence you need to lead a virtue-centered learning community.

Classical education aims at human flourishing. Leadership within that context thus calls on every member of the community to be oriented toward the good. This places a unique burden on the classical school leader to understand not only individual human flourishing, but also how to prudently govern a community ordered to human flourishing. The APEX program assumes that participants have some understanding of the classical tradition, and working in a Great Hearts school or attending the Academy for Classical Teachers can be good first steps in studying that tradition.



APEX Courses & Competencies

Personal Leadership I

Classical Ethos, Pathos, and Logos

Classical school leaders have a demonstrable understanding of and affinity for the classical tradition. In addition, their actions reflect prudence and magnanimity. They are capable proponents of liberal education and the classical tradition.

Personal Leadership II

Emotional Intelligence

Classical school leaders are self-aware and self-disciplined, cognizant of their impact on others and able to manage relationships with trust, candor, and love.

Operationalizing Vision

Leadership Planning and Execution

Classical school leaders understand how to lead a team and are able to generate and manage systems of school leadership and schoolwide communication.

Course 1: **Building a Strong Student Culture**

Course 2: **Building Healthy Parent Communities**

Building Student Culture/Community Leadership

Classical school leaders understand and successfully influence the elements of a strong student culture, including recruitment, co-curriculars, student discipline, events, and key messaging moments. They have a vision for strong student culture and articulate it clearly and compellingly.

Course 1: **Building A Strong Faculty Culture**

Course 2: **Hiring For Mission Fit**

Building Faculty Culture/People Leadership

Classical school leaders understand the elements of a strong faculty culture, including hiring, teacher development, and *esprit de corps*. They have a vision for strong faculty culture and articulate it clearly and compellingly.

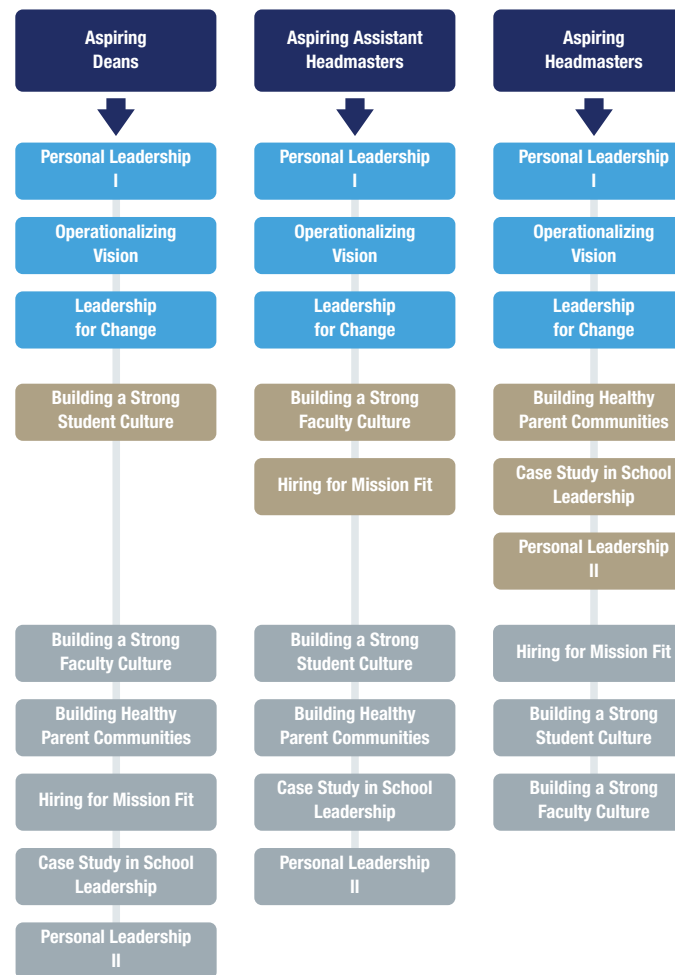
Course 1: **Leadership for Change**

Course 2: **Case Study in School Leadership**

Experience

Classical school leaders are results-oriented. This is true across the many stakeholder groups and areas of the school function, including academics, school culture, and operations. They are successful on a social/interpersonal level, navigating the right path between social and professional functioning.

APEX Pathways



APEX Course Key

Core Courses
Required for every career pathway.

Career Specific
Courses considered especially appropriate for the career you want to follow.

Electives
Courses that should be prioritized last. You may or may not encounter scenarios/readings directly pertinent to your school position.

APEX Program Details

Resources

Throughout the program, APEX gives the participants access to downloadable artifacts that may be adapted for use in a variety of school contexts. APEX assignments are created to simulate on-the-job tasks, allowing participants to build a portfolio of references to use now or in the future. The readings for each course vary, but in general, participants purchase 2-3 texts in order to complete the required reading assignments.



Flexibility

Most courses are four weeks in length, and participants may take stand-alone courses or progress through a systematic scope and sequence. Each course features mostly asynchronous content through an online learning management system, as well as up to four synchronous online discussions.



Nuts & Bolts

Course fees are \$250 per course for non-Great Hearts participants.

Participants need to purchase the course books, which will add between \$15 and \$80 to the course expense.

Each course provides 12-16 hours of activity over a four-week period (summer courses are slightly compressed).

At least one year of teaching experience as a full-time classroom teacher is required to enroll in courses.



APEX Course Descriptions

COURSE 1

Personal Leadership I

This course builds upon the wisdom of the three Delphic maxims inscribed in the Temple of Apollo: “know thyself,” “nothing in excess,” and “certainty brings ruin.”

[MORE INFORMATION...](#)
[REGISTER](#)



COURSE 2

Building a Strong Student Culture

This course uses the classical virtues as a paradigm for cultivating a healthy student body in partnership with teachers.

[MORE INFORMATION...](#)
[REGISTER](#)



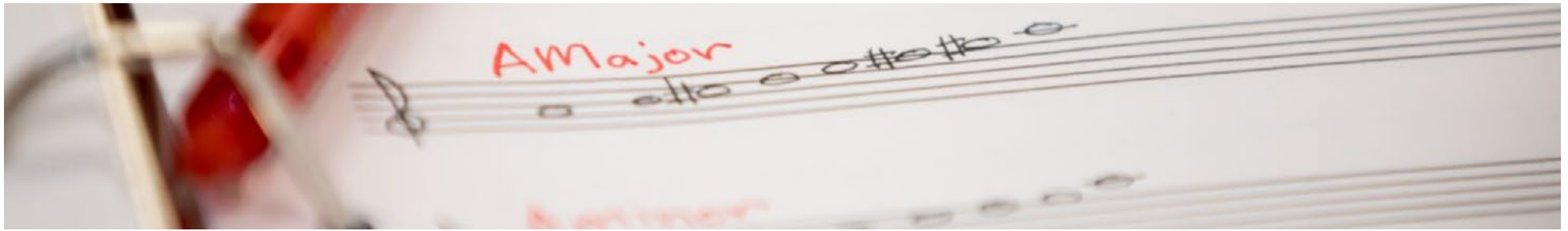
COURSE 3

Building a Strong Faculty Culture

This course develops your understanding of the components of a healthy faculty culture, bringing understanding to bear on the practical, day-to-day decision making processes of a teacher.

[MORE INFORMATION...](#)
[REGISTER](#)





APEX Course Descriptions

COURSE 4

Operationalizing Vision

This course takes current and prospective school leaders through a one-year cycle of operationalizing vision, including delegating strategically.

[MORE INFORMATION...](#)
[REGISTER](#)



COURSE 5

Hiring for Mission Fit

This course highlights one of the critical building blocks of a virtuous faculty culture – hiring for mission fit.

[MORE INFORMATION...](#)
[REGISTER](#)



COURSE 6

Building Healthy Parent Communities

This course takes participants through an exploration of several dyads crucial to a healthy parent community on a school campus.

[MORE INFORMATION...](#)
[REGISTER](#)



COURSE 7

Leadership for Change

This course builds awareness of the larger context of leading schools in the midst of transition and change.

[MORE INFORMATION...](#)
[REGISTER](#)



COURSE 8

Case Study in School Leadership

This course takes participants through specific “on the ground” challenges encountered by real headmasters as they make decisions in their first year as leaders of a young school.

[MORE INFORMATION...](#)
[REGISTER](#)



COURSE 9

Personal Leadership II

This course concludes the APEX sequence with the objective of reflecting on the cultivation of prudence.

[MORE INFORMATION...](#)
[REGISTER](#)

